

# Crankshaft

Robbie McCarthy  
arr. Matt Fowler

$\text{♩} = 160$

Soprano Saxophone

Alto Saxophone

Baritone Saxophone

This system contains the first three measures of the piece. The Soprano Saxophone part begins with a fortissimo (ff) dynamic, followed by a mezzo-piano (mp) section. The Alto Saxophone part also starts with ff and moves to mezzo-forte (mf). The Baritone Saxophone part starts with ff and ends with a forte (f) dynamic and a triplet of eighth notes. The time signature changes from 4/4 to 2/4 and then to 3/4.

4

This system contains measures 4 through 9. It features complex rhythmic patterns and dynamic markings including piano (p), fortissimo (ff), and forte (f). A trill (tr) is indicated for the Alto Saxophone in measure 6. The time signature continues to change, including 5/8, 3/4, and 2/4.

10

1

This system contains measures 10 through 14. It includes a first ending bracket labeled '1' spanning measures 13 and 14. The dynamics range from piano (p) to forte (f). The time signature changes from 3/4 to 4/4 and then to 5/8.

2

15

Handwritten musical score for three staves. The score is divided into two systems. The first system consists of three staves of music. The second system also consists of three staves. The music is written in treble clef. The key signature has one sharp (F#). The time signature is 5/4. The score includes various musical notations such as notes, rests, and dynamic markings. The first staff has a dynamic marking of *f*. The second staff has a dynamic marking of *f*. The third staff has a dynamic marking of *f*. The score ends with a dynamic marking of *ff p*.

21

ff

mf

[illegible]

**2**

27

3

This system contains measures 27 through 30. Measure 27 begins with a treble clef and a descending scale of eighth notes. Measures 28-30 feature complex rhythmic patterns with many beamed eighth and sixteenth notes, often grouped with slurs. The key signature has one flat (B-flat). Measure 30 ends with a repeat sign.

29

*p* *f* *mp* *f* *fp* *mp* *f*

This system contains measures 29 through 32. Measure 29 starts with a treble clef and a series of eighth notes, marked with a piano (*p*) dynamic. Measure 30 has a forte (*f*) dynamic. Measure 31 has a mezzo-piano (*mp*) dynamic. Measure 32 has a forte (*f*) dynamic. The system includes various musical notations such as slurs, ties, and dynamic markings. Measure 32 ends with a repeat sign.

**3**

33

*mp* *f* *mp* *f*

This system contains measures 33 through 36. Measure 33 starts with a treble clef and a series of eighth notes, marked with a mezzo-piano (*mp*) dynamic. Measure 34 has a forte (*f*) dynamic. Measure 35 has a mezzo-piano (*mp*) dynamic. Measure 36 has a forte (*f*) dynamic. The system includes various musical notations such as slurs, ties, and dynamic markings. Measure 36 ends with a repeat sign.

37

*mf*

*mf*

40

4

*mp*

up and down chromatically,  
following contour; pitches not  
important

*mp*

43

*mp*

45

ff

ff

ff

48

4/4

4/4

4/4

50

5

p

p

fp

6

54

*pp*

58

*mp*

60

*mp*

63

*mp*

*mp*

65

*f*

*f*

*f*

6

67

*f*

*mp*

*mf*

*f*

70

Measures 70-75 of a musical score. The score is written for three staves (treble, middle, and bass clefs). The key signature has one flat (B-flat). The time signature is 4/4. The music features complex rhythmic patterns with many beamed sixteenth and thirty-second notes. There are several slurs and accents throughout the passage.

76

Measures 76-77 of a musical score. The score is written for three staves. The key signature has one flat. The time signature is 4/4. The music continues with complex rhythmic patterns. Dynamic markings include *mf* (mezzo-forte) on the first and third staves. There are triplets indicated by a '3' over the notes in measures 76 and 77.

78

Measures 78-79 of a musical score. The score is written for three staves. The key signature has one flat. The time signature is 4/4. The music continues with complex rhythmic patterns. Dynamic markings include *mf* (mezzo-forte) on the first and third staves, and *mp* (mezzo-piano) on the middle staff. There are triplets indicated by a '3' over the notes in measures 78 and 79.





89

Measures 89-90 of a musical score. The score is written for three staves (treble, middle, and bass clefs). The key signature has one sharp (F#). The time signature is 4/4. The first staff begins with a forte (*f*) dynamic. The music consists of eighth and sixteenth notes, many beamed together, with various accidentals (sharps and flats). A slur covers measures 89 and 90. The second staff also begins with a forte (*f*) dynamic. The third staff begins with a forte (*f*) dynamic. The music continues with similar rhythmic patterns and accidentals.

91

Measures 91-92 of a musical score. The score is written for three staves. The key signature has one sharp (F#). The time signature is 4/4. The first staff begins with a trill (*tr*) over a note. The music consists of eighth and sixteenth notes, many beamed together, with various accidentals (sharps and flats). A slur covers measures 91 and 92. The second staff continues the melodic line. The third staff continues the bass line.

93

Measures 93-94 of a musical score. The score is written for three staves. The key signature has one sharp (F#). The time signature is 4/4. The first staff begins with a trill (*tr*) over a note. The music consists of eighth and sixteenth notes, many beamed together, with various accidentals (sharps and flats). A slur covers measures 93 and 94. The second staff continues the melodic line. The third staff continues the bass line. The score ends with a double bar line and a repeat sign.

95

*p*

11

**8**

96

*mf*

*p*

100

101

*p*

105

12

106

*mp*

111

116

9

*mp*

*mf*

*p*

121

Three staves of music in treble and bass clefs. The key signature has one sharp (F#). The music features a mix of eighth and sixteenth notes, often beamed together, and some longer notes with slurs. Measure 121 starts with a treble clef and a sharp sign. The bottom staff has a consistent eighth-note pattern.

125

Three staves of music. Measures 125-128. The music continues with similar rhythmic patterns. Measure 128 ends with a double bar line. The bottom staff continues its eighth-note pattern.

129

10

Three staves of music. Measures 129-132. Measure 129 starts with a treble clef and a sharp sign. The music includes dynamic markings: *mp* (mezzo-piano) in the first staff of measure 132, *p* (piano) in the second staff of measure 132, and *p* in the third staff of measure 132. The bottom staff has a consistent eighth-note pattern.

14

133

mf

p

mf

This system contains measures 133 through 136. Measure 133 features a treble staff with a half note G#4 and a bass staff with a half note G#2. Measure 134 has a treble staff with a half note A#4 and a bass staff with a half note A#2. Measure 135 has a treble staff with a half note B4 and a bass staff with a half note B2. Measure 136 has a treble staff with a half note C#5 and a bass staff with a half note C#2. Dynamics include *mf* in measures 133, 135, and 136, and *p* in measure 136. A crescendo hairpin is located at the bottom right of the system.

137

mf

mf

mp

mf

This system contains measures 137 through 140. Measure 137 has a treble staff with a half note D#5 and a bass staff with a half note D#2. Measure 138 has a treble staff with a half note E5 and a bass staff with a half note E2. Measure 139 has a treble staff with a half note F#5 and a bass staff with a half note F#2. Measure 140 has a treble staff with a half note G#5 and a bass staff with a half note G#2. Dynamics include *mf* in measures 137, 138, and 140, and *mp* in measure 137. A crescendo hairpin is located at the bottom right of the system.

141

mf

mf

f

4/4

4/4

4/4

This system contains measures 141 through 144. Measure 141 has a treble staff with a half note A#5 and a bass staff with a half note A#2. Measure 142 has a treble staff with a half note B5 and a bass staff with a half note B2. Measure 143 has a treble staff with a half note C#6 and a bass staff with a half note C#2. Measure 144 has a treble staff with a half note D#6 and a bass staff with a half note D#2. Dynamics include *mf* in measures 141, 142, and 143, and *f* in measure 142. A crescendo hairpin is located at the bottom right of the system. The system ends with a double bar line and a 4/4 time signature.

146

*mf*

*p*

151

*accel...*

$\text{♩} = 192$

156

*mf*

*f*

16

12

159

3

*mf*

*p*

*p*

162

*mf*

165

*mf*





177 *f* *tr* *b* *mf*

180 *ff* *p* *mf*

183 **14** *tr* *b* *fp* *ff*

186

187

188

189

15

190

191

192

193

194

195

Three staves of music in 3/4 time. The first two staves are marked *f* (forte). The third staff is marked *fp* (fortissimo piano). The music features a melodic line in the upper staves and a more active line in the lower staff. A fermata is placed over the final measure of the first two staves.

197

Four staves of music in 3/4 time. The first two staves are marked *ff* (fortissimo). The third staff is marked *ff* and has a triplet of eighth notes. The fourth staff is marked *ff*. The music features a melodic line in the upper staves and a more active line in the lower staff. A fermata is placed over the final measure of the first two staves.

199

Three staves of music in 4/4 time. The first two staves are marked *ff* (fortissimo). The third staff is marked *ff*. The music features a melodic line in the upper staves and a more active line in the lower staff. A fermata is placed over the final measure of the first two staves.

## Soprano Saxophone

## Crankshaft

1

Robbie McCarthy  
arr. Matt Fowler

$\text{♩} = 160$

**Staff 1:**  $\text{ff}$ ,  $\text{mp}$

**Staff 2:**  $p$

**Staff 3:**  $p$ ,  $f$ ,  $p$ , **1**

**Staff 4:**  $f$

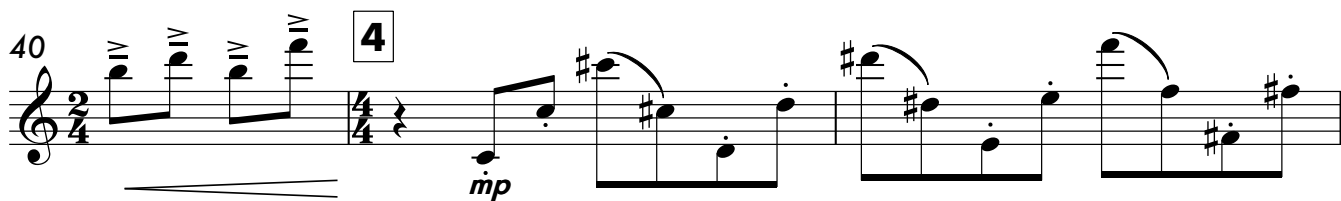
**Staff 5:**  $\text{ff}$

**Staff 6:**  $\text{fp}$ ,  $f$ , **2**

**Staff 7:**  $p$ ,  $f$ ,  $\text{mp}$

**Staff 8:**  $f$ , **3**,  $\text{mp}$ ,  $f$

## Soprano Saxophone



Soprano Saxophone

65

5 5 5 5 *f*

67 **6**

*mp*

70

*mf*

76

*mf* *mf*

79

*mf*

81 **7**

*f*

85

*mf*

87 *tr*

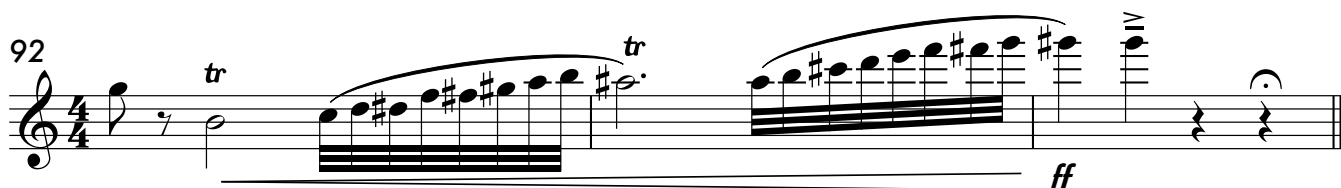
*mf*

## Soprano Saxophone

89 *f*



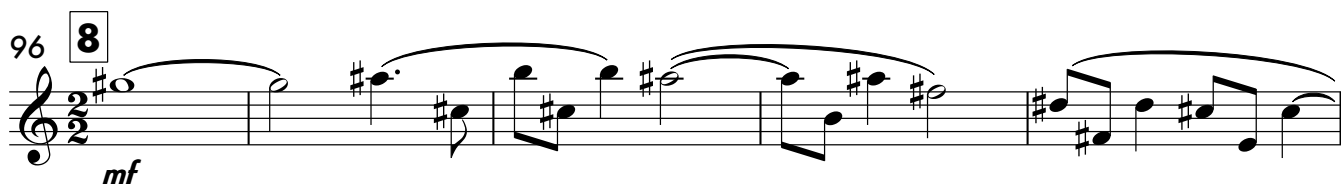
92 *tr* *ff*



95 *p*



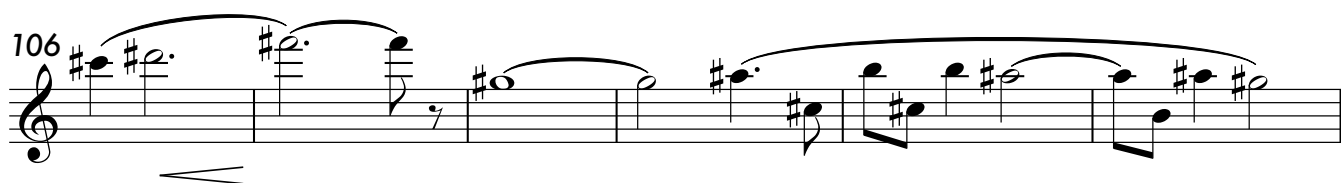
96 **8** *mf*



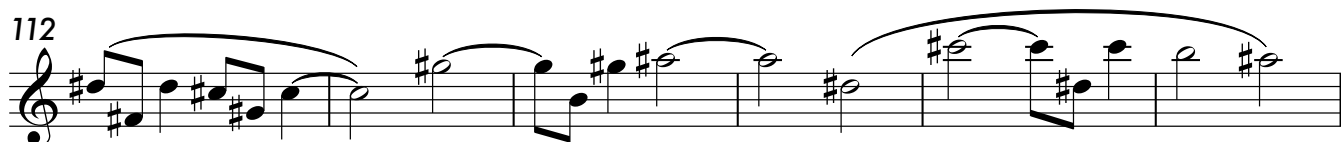
101



106



112



118 **9** *mp*



127

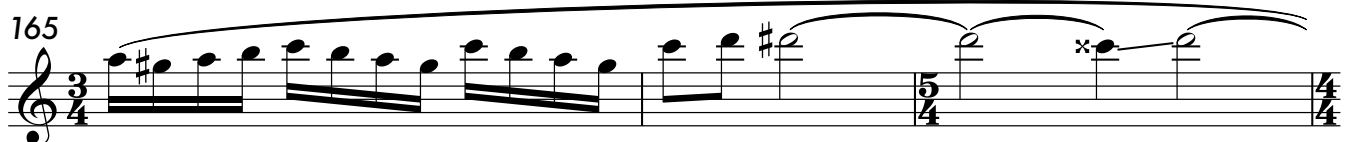
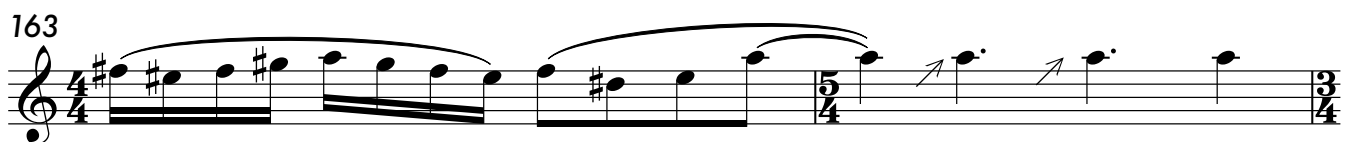
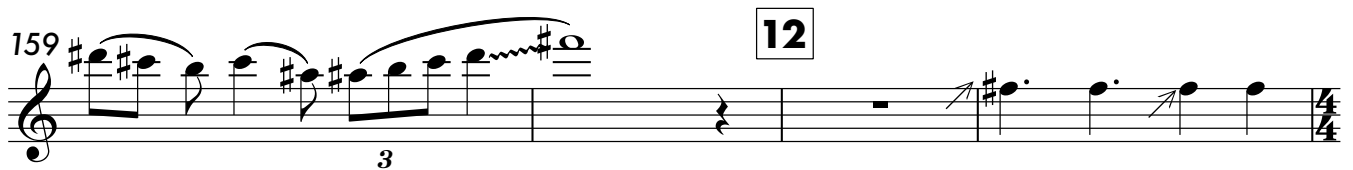
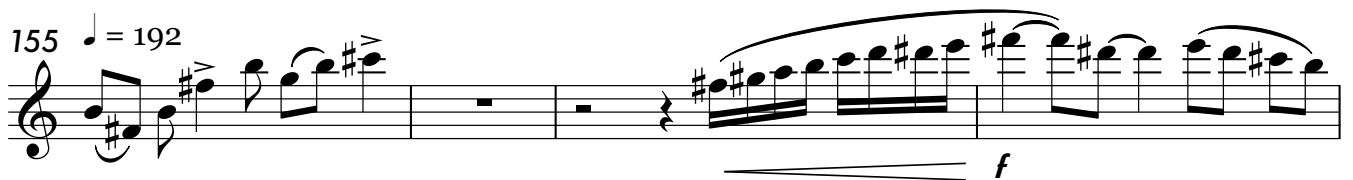
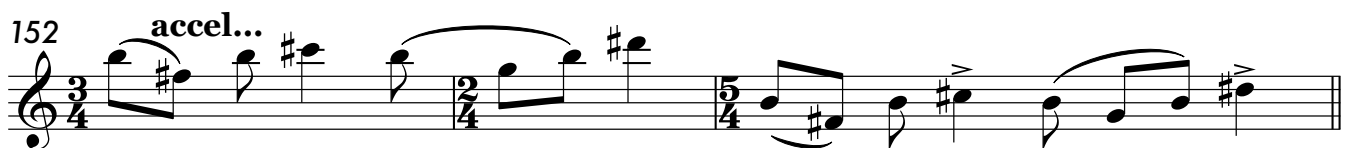
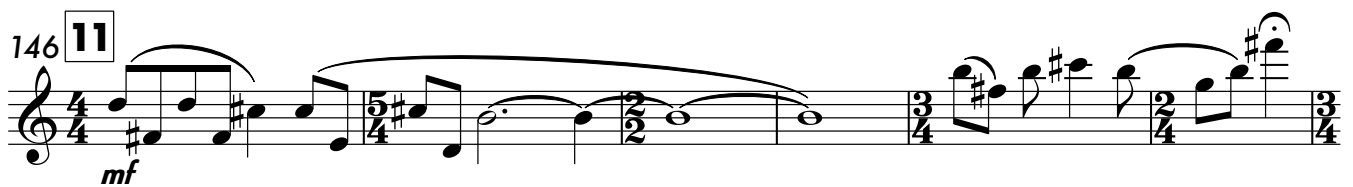
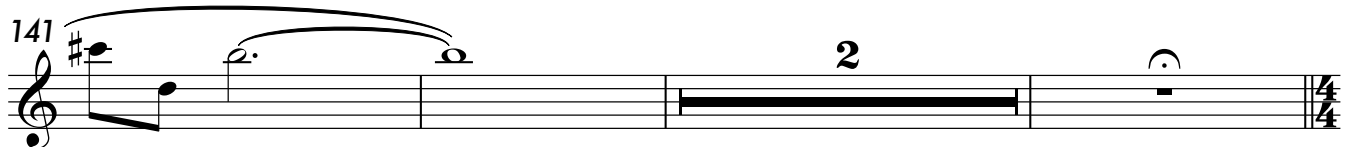
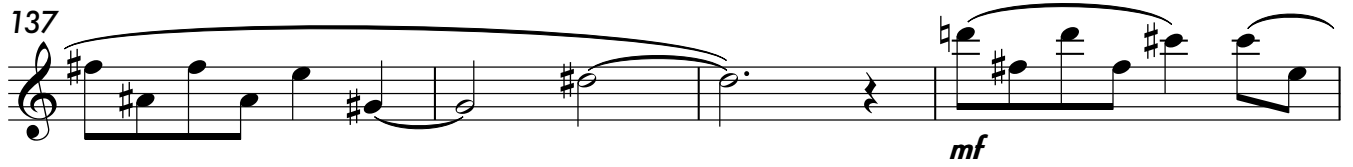
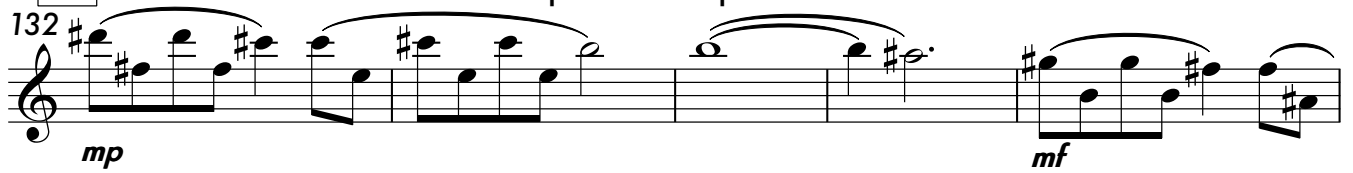




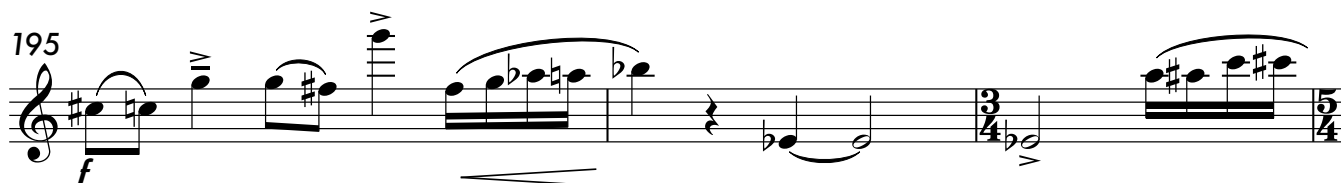
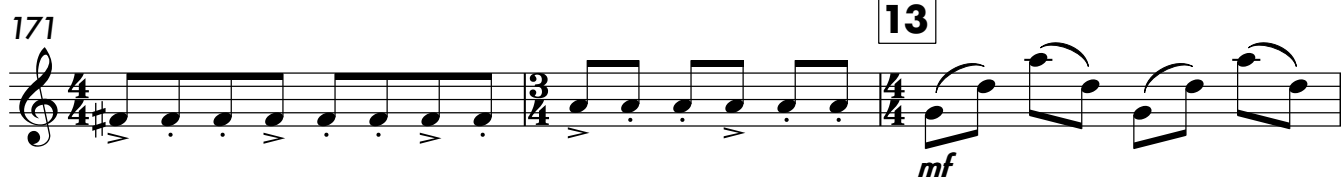
10

## Soprano Saxophone

5



## Soprano Saxophone



## Alto Saxophone

## Crankshaft

1

Robbie McCarthy  
arr. Matt Fowler

$\text{♩} = 160$

**Measures 1-5:** 4/4 time. Starts with *ff* dynamics. Measure 5 has a *mf* dynamic.

**Measures 6-12:** 3/4 time. Measure 6 has a *fp* dynamic. Measure 12 has a *p* dynamic.

**Measures 13-18:** 5/8 time. Measure 13 is the start of a first ending, marked with a '1' in a box. Measure 18 has a *p* dynamic.

**Measures 19-22:** 5/4 time. Measure 19 has a *f* dynamic. Measure 22 has a *ff* dynamic.

**Measures 23-26:** 4/4 time. Measure 23 has a *f* dynamic. Measure 26 has a *f* dynamic.

**Measures 27-29:** 4/4 time. Measure 27 is the start of a second ending, marked with a '2' in a box. Measure 29 has a *f* dynamic.

**Measures 30-33:** 4/4 time. Measure 30 has a *fp* dynamic. Measure 32 has a *mp* dynamic.

**Measures 34-36:** 3/4 time. Measure 34 is the start of a third ending, marked with a '3' in a box. Measure 36 has a *f* dynamic.

## Alto Saxophone

37 *mf*

41 **4** *mp*

up and down chromatically,  
following contour; pitches not  
important

43

45 *ff*

48

51 **5** *p*

3

58 *mp*

3

63 *mp*

66

5

# Alto Saxophone

3

67 **6**

*f* *mf*

70

76 *mf*

78 *mp* *mp* *fp* **7**

83 *f* *tr* *5*

86

89 *f*

92

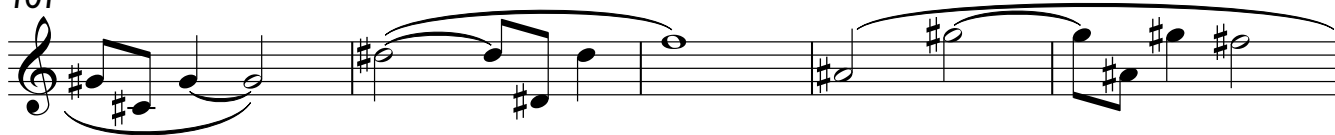
93 *ff*

95

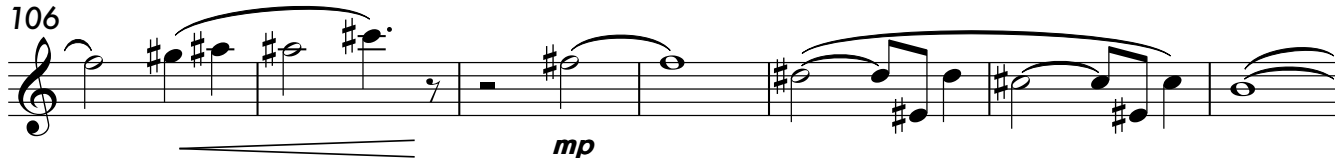
## Alto Saxophone

96 **8**

101



106



113



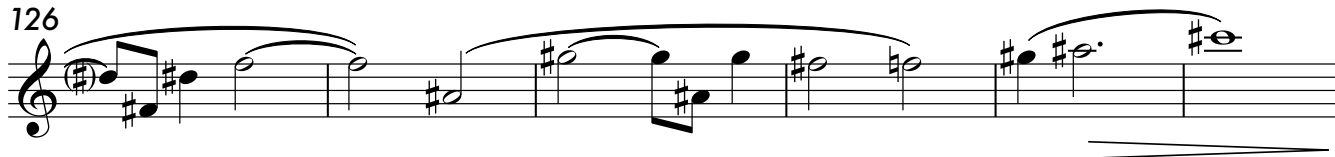
117

**9**

121



126

132 **10**

137



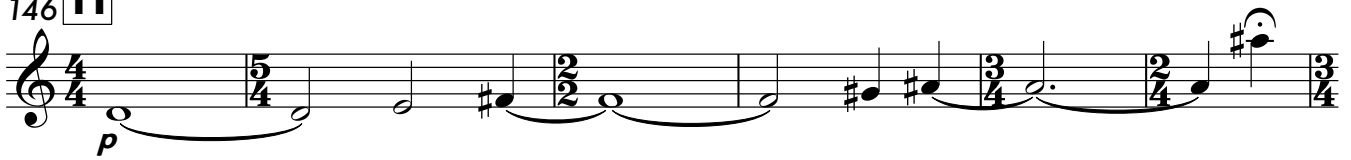
141



# Alto Saxophone

5

146 **11**



152 **accel...**



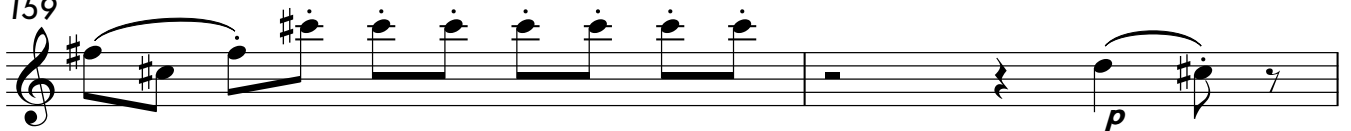
155 ♩ = 192



157



159



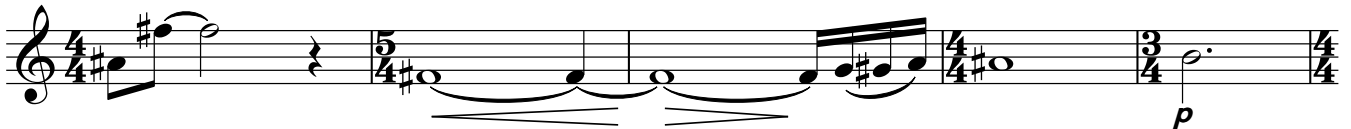
161 **12**



164



168



173 **13**



175



## Alto Saxophone

177 *mf*

181 *ff* *mf*

184 **14** *ff*

186

190 **15** *mp*

195 *f*

197 *ff*

199



## Baritone Saxophone

1

♩ = 160

ff *f* 3 *p*

7 *f* *p* *f*

13 **1** *p* *f*

20 *ff* *p*

23 *fp* *f*

27 **2** 3

30 *fp* *f*

34 **3** *mp* *f*

37 *mf*

## Baritone Saxophone

40 **4**

43

45 *ff*

48 **5** *fp*

54 *pp* *mp*

59

63 *mp* *f*

67 **6** *f*

70

76 *mf* *mf*

This musical score for Baritone Saxophone spans measures 40 to 76. The notation is in treble clef with various time signatures including 2/4, 3/4, 4/4, 5/8, and 3/2. Measure 40 features a box containing the number '4'. Measure 48 features a box containing the number '5'. Measure 67 features a box containing the number '6'. Dynamic markings include *ff* (fortissimo), *fp* (fortissimo piano), *pp* (pianissimo), *mp* (mezzo-piano), *f* (forte), and *mf* (mezzo-forte). Articulation marks such as accents (>) and slurs are present throughout. Measure 40 has a slur over measures 40-42. Measure 43 has a slur over measures 43-45. Measure 45 has a slur over measures 45-47. Measure 48 has a slur over measures 48-50. Measure 54 has a slur over measures 54-56. Measure 59 has a slur over measures 59-61. Measure 63 has a slur over measures 63-65. Measure 67 has a slur over measures 67-69. Measure 70 has a slur over measures 70-72. Measure 76 has a slur over measures 76-78. Measure 76 has a slur over measures 76-78.

# Baritone Saxophone

3

80 7

*fp* *f*

85

*mf* *fp* *f* *mp* *mf*

89

*f*

92

*ff*

95

96 8

*p*

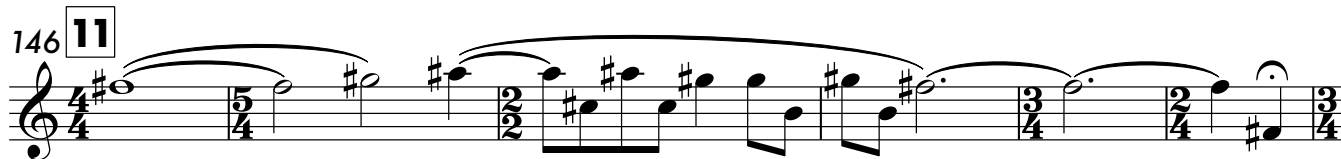
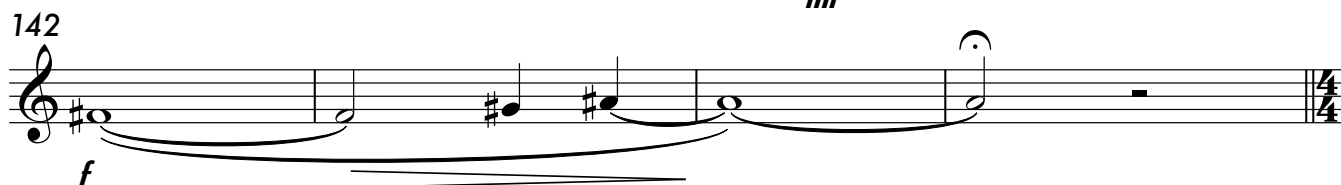
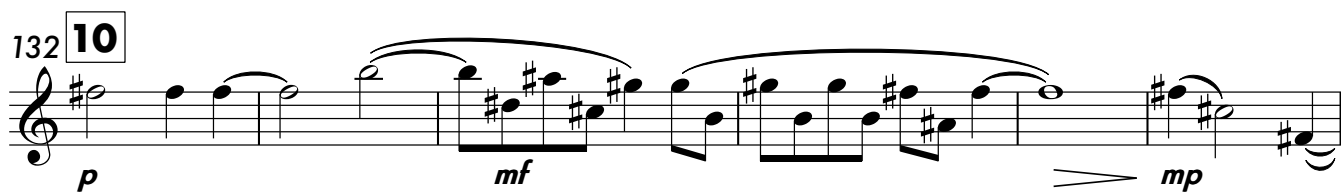
106

*p*

118 9

*mf* *p*

## Baritone Saxophone



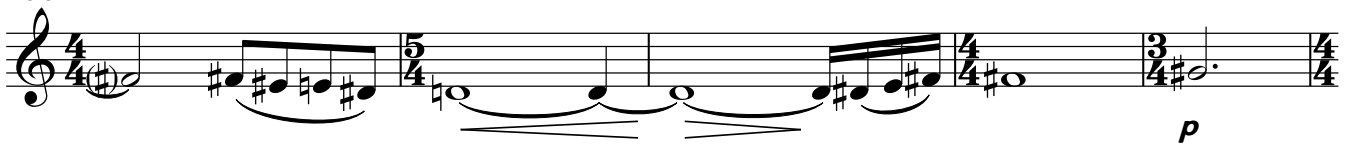
# Baritone Saxophone

5

163



168

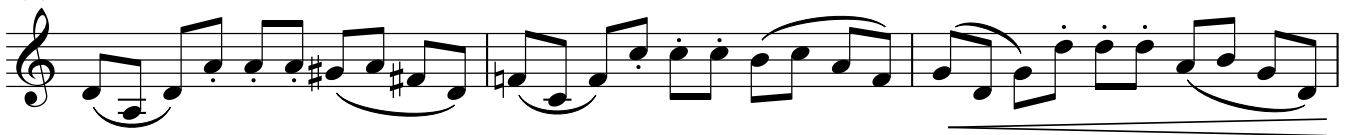


173

13



177



180



183

14



186



191

15



195



198

